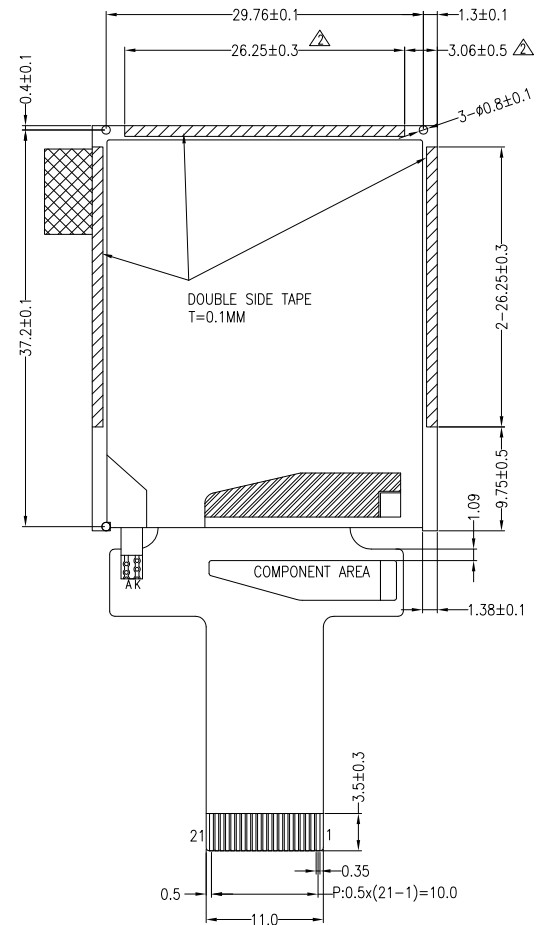
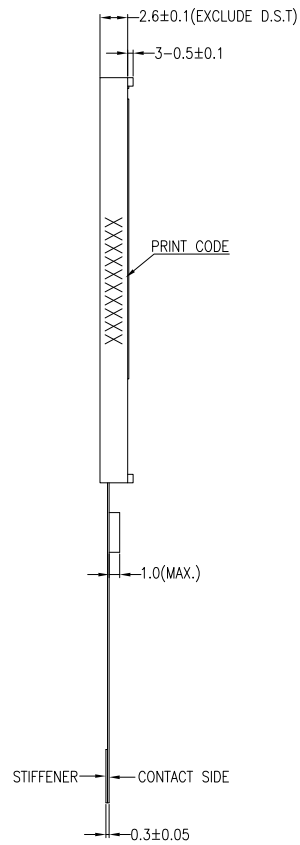


DETAIL A  
(SCALE 40:1)



BACKLIGHT CIRCUIT DIAGRAM

PIN DESCRIPTION	
PIN	SYMBOL
1	A
2	K
3	VDD
4	VDDI
5	GND
6	IM2
7	SPI4W
8	/CS
9	RESET
10	RD
11	WR
12	RS
13	D7
14	D6
15	D5
16	D4
17	D3
18	D2
19	D1
20	D0
21	GND

NOTES:

1. DISPLAY TYPE: TFT, TRANSMISSIVE, NORMALLY WHITE
2. OPERATING VOLTAGE: VDD=2.8V (TYP.)
3. VIEWING DIRECTION: 6 O'CLOCK
4. DRIVER IC: ST7735S
5. OPERATING TEMP.: -20°C ~ 70°C
6. STORAGE TEMP.: -30°C ~ 80°C
7. LED BACKLIGHT: 1-CHIP WHITE LED, IF=15mA, VF=3.2V±0.2V
8. SURFACE LUMINANCE: 240CD/M<sup>2</sup> (TYP.)
9. TOP POLARIZER SURFACE TREATMENT: GLARE
10. GENERAL TOLERANCE: ±0.2MM
11. ROHS COMPLIANT

VER.	REVISED DESCRIPTION	REVISER	DATE
02	CORRECT THE SIZE OF D.S.T.	RITA	2020.08.06
01	FIRST ISSUE	RITA	2018.05.16

MULTI-INNO TECHNOLOGY CO., LTD.			
DRAWN BY:	RITA	2018.05.16	SCALE : 1/1
CHECKED BY:			MODULE P/N:
APPROVED BY:			MI0145B1T-3
VERSION NO:	02		DESCRIPTION:
			TFT MODULE